

Timeouts with Your Dog

Info for you and your four-legged friend

Exploring the Schladming-Dachstein region with your dog

We have created this leaflet so that you can have a wonderful time filled with great experiences during your »timeout« with your four-legged friend in the Schladming-Dachstein region. That said, it is important to be aware of a few basics, so that you, your furry friend, the inhabitants of our unique natural and cultural world, as well as your fellow nature lovers are all able to enjoy this extraordinary setting as well.



Which requires you to follow **a few simple rules, including a general leash law.**

Why is it important?

Only you, as the dog owner, have the power to ensure that certain problems and dangers never even arise. If, for example, your dog isn't on a leash, you will never have him 100 % under your control or in your field of view – when you are hiking or taking a stroll, it's very easy to lose sight of your dog.

The unfortunate consequence: Various situations may crop up that are **problematic, risky and even life-threatening** for other residents of our natural and cultural world and your fellow nature users, which they themselves have no influence over.

- » One example: Your dog briefly disappears behind some bushes, where he **inadvertently scares a mother doe away from her fawn**. The dog then sniffs the young deer, thereby "marking" it, causing the mother deer to permanently abandon her young.
- » On open pastures, caution is required whenever you encounter mother animals with their young. Mother cows, horses and even mother sheep respond defensively when confronted by a dog, which, in their eyes, presents **the same threat as a wolf** – the greatest enemy of these animals for thousands of years. An attack by a grazing animal is one of the few reasons to let your dog off the leash, so that you don't put yourself in personal danger.



- » For **people who are extremely respectful or even afraid of dogs**, an encounter with an unleashed dog may lead to risky situations – for example, on narrow hiking paths. Therefore, respectful and considerate interactions are essential.
- » If your dog is off leash, you might neglect to pick up the "little gift" your friend deposited on the grass. This represents a significant source of pollution for pastures in our region.

Here's what Dr. Matthias Brandstätter, a local vet, has to say on the subject:

*"Dog feces are not fertilizer and unpleasant, to say the least, when encountered in the middle of a beautiful meadow. The feces may also contain the single-celled parasite Neospora caninum, which causes **miscarriages or birth defects in cattle**. Feces may also harbor the eggs of the fox tapeworm (Echinococcus multilocularis) and/or the dog tapeworm (Echinococcus granulosus), which may also infect people and **cause severe illness**. Whilst the probability of parasite transmission through dog feces is minimal (due to commercial pet foods), it cannot be excluded completely. Dogs from southern and eastern Europe, which are often imported and adopted out for their welfare, represent a particular source of infection.*

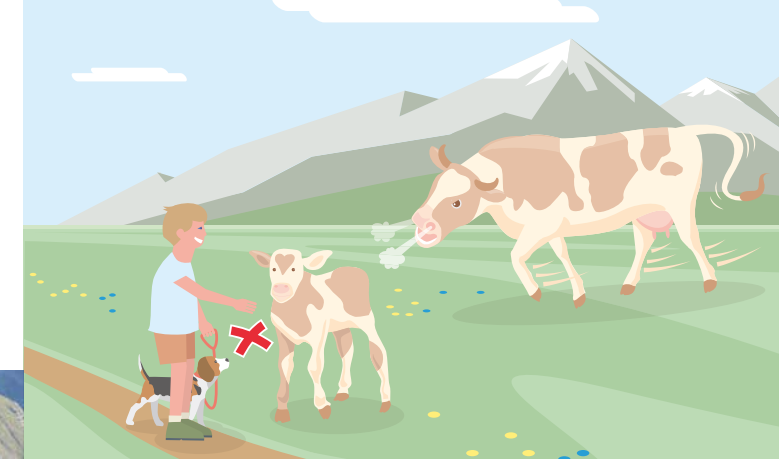
- » If you throw a stick for your four-legged friend to fetch, make sure he brings it back. Sticks left in the middle of fields may **cause damage to mowing machinery**.

- » In general, try to avoid walking across feeding and grazing areas. **Rather than being playgrounds, they are vital for feed production and the commercial survival of farms.** Ultimately, the appearance of **our beautiful cultural landscape depends heavily on thriving farms.**



Important during the coldest season

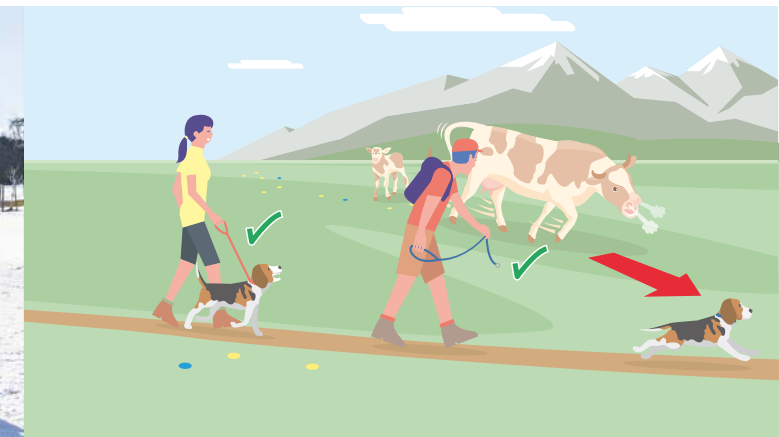
- » Always take "poop bags" with you in winter as well and dispose of them appropriately, otherwise the feces will still be there in the fields come springtime.
- » Only use marked hiking paths when you are with your dog. On the pistes and cross-country ski trails, dogs are a danger to anyone actively engaged in sports.



Please **respect the general rules and regulations such as the leash law**, a muzzle (where required), and cleaning up once your four-legged friend has "done his business".

Safe behavior in (alpine) grazing areas

- » Keep your distance. Mother animals protect their young.
- » When they are being driven, cattle are accustomed to being guided with big sticks. Always have a hiking pole with you whenever you are in a grazing area in case you need to defend yourself in an emergency.
- » You enter such areas with dogs at our own risk.
- » Never approach grazing animals with your dog. By doing so, you are putting yourself in harm's way!
- » If in danger, let your dog off the leash!



Gondola Lifts

You are welcome to use the gondolas with your dog. However, he must be on a leash and wear a muzzle.

Riesneralm

8953 Irdning-Donnersbachtal, +43 3680 606



Rittisberg

8972 Ramsau am Dachstein, +43 3687 81 776



Planai Seilbahn

8970 Schladming, +43 3687 22042 140



Hochwurzen Gipfelbahn

8971 Schladming-Rohrmoos, +43 3687 22042 140



Preunegg Jet Reiteralm

8973 Schladming-Preunegg, +43 6454 7357 600



Tauern Seilbahn Hauser Kaibling

8967 Haus im Ennstal, +43 3686 3030



8er-Gondelbahn Hauser Kaibling

8967 Haus im Ennstal, +43 3686 3030



Dachstein Gletscherbahn

8972 Ramsau am Dachstein, +43 3687 22042 800



Galsterbergalm Gondelbahn

8965 Michaelerberg-Pruggern, +43 3685 22845



Current prices can be found online at

www.schladming-dachstein.at/dog

Publisher: Tourismusverband Schladming-Dachstein.
Images: Martin Huber (4), Hans-Peter Steiner - www.photo-austria.at
Graphics „Behaviour with dog“: BMNT/Andreas Rampitsch
Research, printing and typographical errors reserved. The publisher cannot be held responsible for damage resulting from improper handling of dogs or other animals. .



On buses

Dogs must be leashed and muzzled on all buses!

Planai Public Buses and Valley Hiking Shuttles:

The fare for your dog is based on the applicable children's fare for the zone(s) in question. Assistance dogs ride for free!

Ramsau Public Buses:

The same rules apply as for the Planai buses.



With your dog at the swimming lake

Dogs on leashes are permitted in sunbathing areas, **though not in the water**, at the following swimming lakes!

- » Donnersbach Recreation Area
- » Donnersbachwald Recreation Area
- » Irdning Recreation Area
- » Riesneralm “Summit Pool”
- » “Ramsau-Beach” Recreation Park

If your dog wants to cool off in the water from time to time, there are many small streams in the region where you are certain to find a perfect spot for a refreshing dip.

Hiking with dogs



Schladming-Dachstein boasts an incredible array of footpaths, hiking trails and alpine tours. Most of those are available to you and your four-legged friend, though **there are some areas which your dog may not enter** – in order to protect wildlife or due to intensive cattle grazing.

This includes upper Obertal near Schladming from the Eschachalm, Gumpental from the Maierlalm as well as the Maralm area of the Ramsau alpine pastures. Detailed information can be found in current outdoor-recreation maps for the Schladming-Dachstein Region.

The right tour for your dog

Not every hike is suitable for every person. And the same applies to dogs. Due to the distance, elevations, exposure, surface or trail conditions, it may well be that certain hiking tours are not appropriate for your dog.

One example is the Höll alpine trail in Untertal, which, due to steep steps, is a real challenge for dogs. It also features several metal gratings that may be painful on your dog's paws.



On our website, we have provided an overview for you of hiking tours suitable for dogs. If you have detailed questions, our colleagues at the local and regional information centers are always happy to assist.
www.schladming-dachstein.at/dog



Useful guidelines about hiking with dogs can also be found on the website www.sichere-almen.at, presented to you by the Austrian Federal Ministry of Agriculture, Regions and Tourism.



PurePrint®
Innovated by gugler® DruckSinn
Gesund. Rückstandsfrei. Klimapositiv.
drucksinn.at

greenprint*
klimapositiv gedruckt



Where you can let your dog run off leash

Schladming Dog Park

500 meters east of the Athletic Area (parking), next to the Ennsrunde and Römerweg walking tours and “The Classic Run”.

Haus im Ennstal Dog Park

North of the soccer field, close to the River Enns, next to the round tours #5 Weißenbach tour, #6 Sonnberg tour and #8 Weißenbach tour via Birnberg.

These shops are there for your four-legged friend

Pet supplies @ Lagerhaus

Aigen 59/2, 8943 Aigen im Ennstal

Pet supplies @ Baufreund

Gewerbestraße 686, 8970 Schladming


Get to know your furry friend better

DOGclusion Dog School

Petra Rauch, Oberhaus 12, 8967 Haus im Ennstal
+43 664 91 66 560, petra@dogclusion.at, www.dogclusion.at

Get to know and appreciate your dog better. What's the correct way for you to behave in certain situations that may be unfamiliar to you or your dog?

Tourismusverband Schladming-Dachstein
Ramsauerstraße 756
8970 Schladming
+43 3687 23310
info@schladming-dachstein.at
www.schladming-dachstein.at
© 2022. Subject to change.

 Austria
Feel the spark